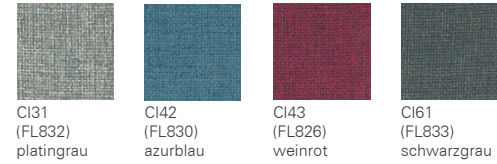
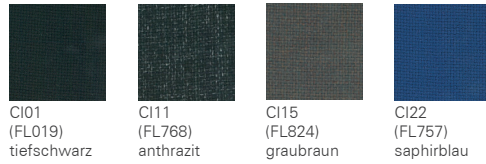


Stoffgruppe 1

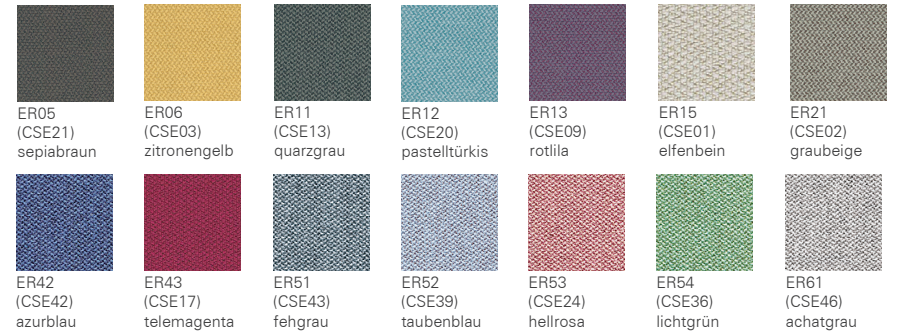
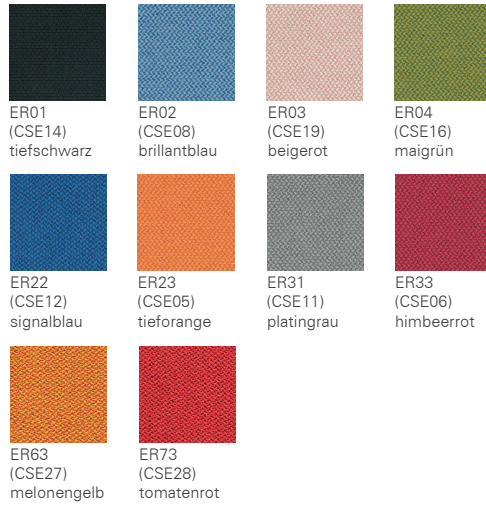
Citadel

100% Polypropylen FR
320 g/lfm



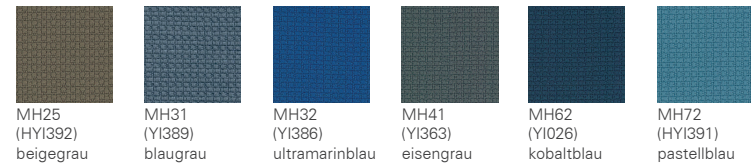
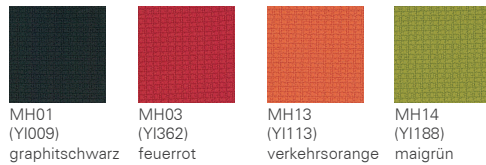
Era

100% Polyester
448 g/lfm



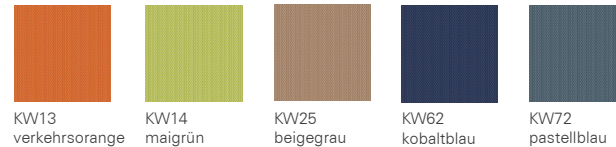
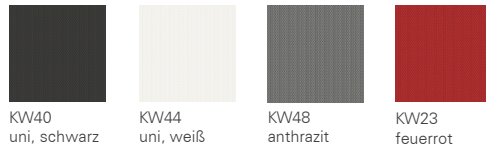
Manhattan

100% recyceltes Polyester
405 g/lfm



Strick

100 % Polyester
580 g/lfm



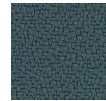
Stoffgruppe 2

Lucia

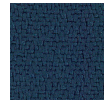
100% Polyester
400 g/lfm



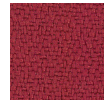
5800
(YP009)
schwarz



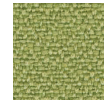
5801
(YP019)
verkehrsgrau



5803
(YP026)
saphirblau



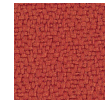
5805
(YP106)
rubinrot



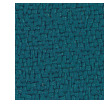
5809
(YP108)
blassgrün



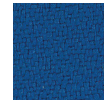
5811
(YP110)
maisgelb



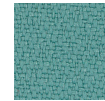
5816
(YP076)
blutorange



5824
(YP011)
ozeanblau



5832
(YP082)
mittelblau



5814
(YP112)
minttürkis



5823
(YP051)
burgund

King

100% Polyester (Trevira CS)
365 g/lfm



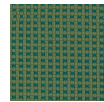
KI01
(8033)
schwarzbraun



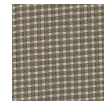
KI03
(4027)
signalrot



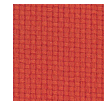
KI11
(8510)
graubraun



KI14
(7519)
farngrün



KI15
(2514)
ockergelb



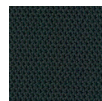
KI43
(3094)
blutorange



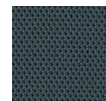
KI62
(6617)
nachtblau

Royal

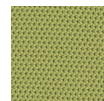
100% Polyester
490 g/lfm



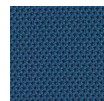
RO01
(PS004)
tiefschwarz



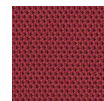
RO11
(PS030)
graphitgrau



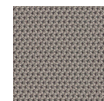
RO14
(PS026)
blassgrün



RO22
(PS033)
violettblau



RO53
(PS011)
rubinrot



RO61
(PS002)
beige grau

Medley

100% Polyester
510 g/lfm



MD01
(60999)
schwarzgrau



MD03
(64019)
verkehrrot



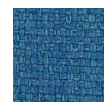
MD06
(62002)
ginstergelb



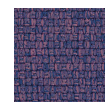
MD14
(68114)
grünbeige



MD21
(66008)
fehgrau



MD22
(66009)
violettblau



MD23
(65012)
rotlila



MD31
(60004)
graphitgrau



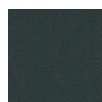
MD32
(66010)
stahlblau



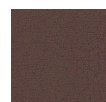
MD43
(64125)
signalrot

Amalfi

86% PVC
14% Polyester
910 g/lfm



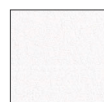
AM01
(008716)
signalschwarz



AM05
(008719)
nussbraun



AM06
(008731)
sonnengelb



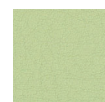
AM07
(008717)
cremeweiß



AM12
(014128)
pastellblau



AM13
(008732)
signalrot



AM14
(014129)
weißgrün



AM16
(014131)
zinkgelb



AM17
(008714)
hellbeige



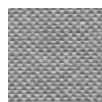
AM22
(008720)
stahlblau



AM33
(008726)
pastellgelb

Jet

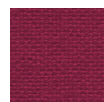
100% Polyester
365 g/lfm



JT01
(9804)
blaugrau



JT02
(9610)
pastelltürkis



JT03
(4017)
bordeauxviolett



JT04
(9701)
farngrün



JT06
(9304)
honiggelb



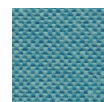
JT11
(8009)
eisengrau



JT12
(6007)
türkisblau



JT14
(9703)
olivgrün



JT22
(9609)
wasserblau



JT24
(7034)
khakigrün



JT32
(6091)
ozeanblau

in Klammern: Herstellernummern

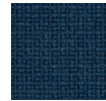
Stoffgruppe 3 (weitere auf Folgeseite)

Fame

95% Schurwolle
5% Polyamid
630 g/lfm



FA01
(60999)
tiefschwarz



FA02
(66071)
saphirblau



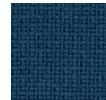
FA07
(60005)
perlweiß



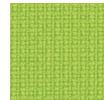
FA13
(64089)
signalrot



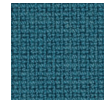
FA61
(60003)
anthrazitgrau



FA62
(67005)
wasserblau



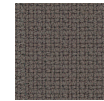
FA64
(68144)
gelbgrün



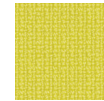
FA72
(67069)
capriblau



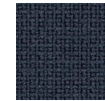
FAK3
(64055)
bordeauxviolett



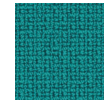
FA15
(61135)
blassbraun



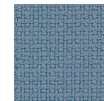
FA16
(62067)
schwefelgelb



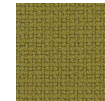
FA21
(60017)
graublau



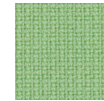
FA24
(67016)
ozeanblau



FA32
(66130)
taubenblau



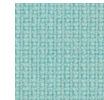
FA44
(68004)
honiggelb



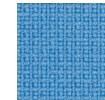
FA54
(68147)
blassgrün



FA91
(60078)
staubgrau



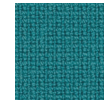
FAB2
(67068)
türkisblau



FAC2
(66118)
brillantblau



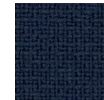
FAH3
(64058)
purpurrot



FAI2
(67067)
grünblau



FAJ3
(64169)
hellrosa



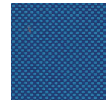
FAA2
(66061)
schwarzblau

Field

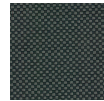
100% Polyester (Trevira CS)
450 g/lfm



FI03
(662)
kaminrot



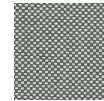
* FI32
(762)
ultramarinblau



FI41
(182)
schwarzgrau



FI51
(192)
schwarz



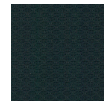
FI81
(132)
graphitgrau

* FI32

Auslauffarbe, Verfügbarkeit wird
auf Anfrage geprüft

Climatex Ultra

72% Cradura™
16% Farmwolle
12% Redesigned Lenzing FR™
437 g/lfm



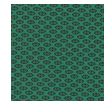
UL01*
(491 008-999)
verkehrsschwarz



UL02*
(491 008-575)
kobaltblau



UL03
(491 008-353)
verkehrsrot



UL04
(491 008-696)
patinagrün



UL05
(491 008-792)
schwarzbraun

Patina

69% Wolle
22% Flachs
8% Polyamid
1% Viskose
462 g/lfm



PT01
(PAT20)
tiefschwarz



PT02
(PAT43)
perlbrömbeer



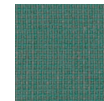
PT03
(PAT18)
rotviolett



PT04
(PAT39)
gelbgrün



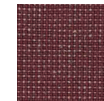
PT06
(PAT16)
sandgelb



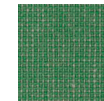
PT11
(PAT32)
wasserblau



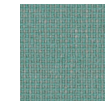
PT12
(PAT05)
ozeanblau



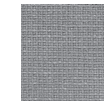
PT13
(PAT42)
bordeauxviolett



PT14
(PAT28)
platinagrün



PT22
(PAT01)
türkisblau

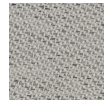


PT32
(PAT12)
staubgrau

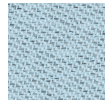
Stoffgruppe 3

Chili

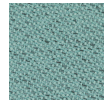
75% recyceltes Polyester FR
25% Polyester FR
470 g/lfm



CH01
(60115)
perlhellgrau



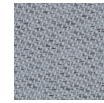
CH02
(66175)
pastellblau



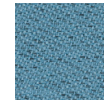
CH04
(68189)
minttürkis



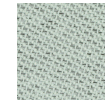
CH07
(60114)
weißaluminium



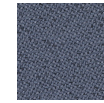
CH11
(60117)
fehgrau



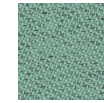
CH12
(66176)
brillantblau



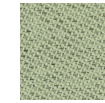
CH14
(68191)
weissgrün



CH21
(60081)
graublau



CH24
(68192)
platinagrün



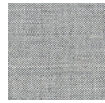
CH34
(68195)
blassgrün

Remix

90% Schurwolle
10% Kammgarn
420 g/lfm



RE05
(233)
graubeige



RE15
(123)
verkehrsgrau



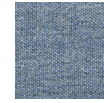
RE25
(223)
elfenbein



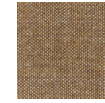
RE27
(682)
perlbrömbeer



RE35
(452)
kupferbraun



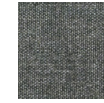
RE42
(733)
azurblau



RE45
(252)
olivbraun



RE65
(612)
braunbeige



RE71
(163)
umbragrau



RE81
(143)
basaltgrau



REA1
(692)
schwarzgrau



RED1
(242)
betongrau

Performance

100% Polyester
400 g/lfm
HeiQ Viroblock



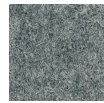
ZQ01
schwarz

* Diese Stoffe können auf Anfrage auch als leitfähige Variante für die Kollektionen Goal und Hero eingesetzt werden.

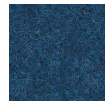
High-Performance-Gruppe 4

Synergy

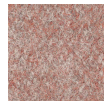
95% Schurwolle
5% Polyamid
560 g/lfm



YS01
(LDS16)
quarzgrau



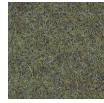
YS02
(LDS62)
violettblau



YS03
(LDS74)
hellrosa



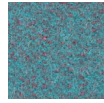
YS04
(LDS46)
weißgrün



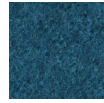
YS25
(LDS48)
olivbraun



YS26
(LDS45)
honiggelb



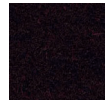
YS32
(LDS56)
perlenzian



YS34
(LDS59)
grünblau



YS73
(LDS86)
signalrot



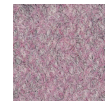
YS93
(LDS88)
schwarzrot



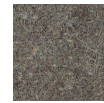
YS05
(LDS32)
graubeige



YS11
(LDS27)
verkehrsschwarz



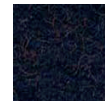
YS13
(LDS07)
pastellviolett



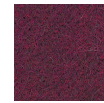
YS15
(LDS33)
blassbraun



YS16
(LDS28)
zitronengelb



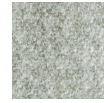
YS22
(LDS61)
purpurviolett



YS23
(LDS87)
purpurrot



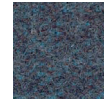
YS35
(LDS34)
graubraun



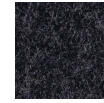
YS41
(LDS08)
verkehrsgrau



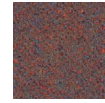
YS43
(LDS36)
rotviolett



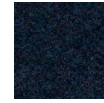
YS44
(LDS58)
schwarzgrün



YS51
(LDS17)
schwarzgrau



YS53
(LDS76)
perlrosa



YS54
(LDS60)
ozeanblau

PUxx

100% Polyurethan
740 g/lfm



PU01
(21.5816)
schwarzgrau



PU02
(21.7609)
graublau



PU03
(21.9533)
altrosa



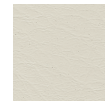
PU04
(21.6441)
schilfgrün



PU05
(21.7707)
blassbraun



PU06
(21.7148)
hellelfenbein



PU07
(21.7136)
perlweiß



PU11
(21.7261)
zementgrau



PU12
(21.7606)
grünblau



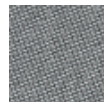
PU15
(21.9527)
kupferbraun



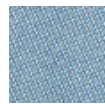
PU22
(21.7608)
ozeanblau

Rime

90% Schurwolle, Kammgarn
10% Nylon
580 g/lfm



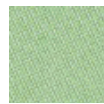
RI01
(151)
signalschwarz



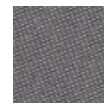
RI02
(721)
azurblau



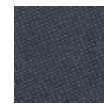
RI03
(521)
tieforange



RI04
(921)
maigrün



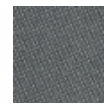
RI05
(641)
blassbraun



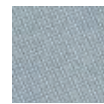
RI11
(791)
schwarzgrau



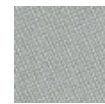
RI13
(621)
erdbeerrrot



RI15
(271)
graubraun



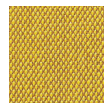
RI21
(131)
fehgrau



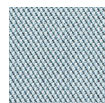
RI31
(231)
olivgrau

Steelcut Trio 3

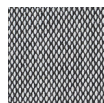
90% Schurwolle, Kammgarn
10% Nylon
770 g/lfm



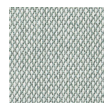
ST06
(453)
signalgelb



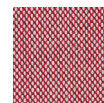
ST27
(713)
fenstergrau



ST37
(124)
zeltgrau



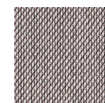
ST47
(113)
lichtgrau



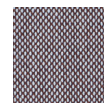
ST53
(636)
verkehrstrot



ST65
(436)
orangebraun



ST75
(616)
graubraun



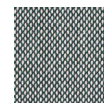
ST85
(336)
nussbraun



ST87
(213)
seidengrau



STA7
(205)
steingrau



STB4
(916)
kieferngrün

in Klammern: Herstellernummern

Ledergruppe 6

Rind-Nappa-Leder



0781
signalschwarz

Ledergruppe 7

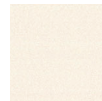
Leder Ascot*



SA01
(2900)
signalschwarz



SA07
(2100)
signalweiß



SA17
(2110)
cremeweiß



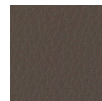
SA22
(2560)
graublau



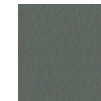
SAC1
(2655)
platingrau



SAE5
(2260)
ockerbraun



SAG5
(2865)
sepiabraun



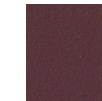
SA51
(2760)
quarzgrau



SA82
(2522)
pastellblau



SA85
(2180)
graubeige



SA93
(2430)
bordeauxviolett



SAA1
(2120)
kieselgrau



SAB1
(2175)
beige

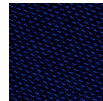
ESD

Duotec ESD

89% Polyacryl
2% Lycra
535 g/lfm



9801
schwarz



9802
blau



9803
rot



9811
grau

Technisches Gewebe

Zaha

100% Polyester
ca. 405 g/lfm



ZH01
schwarz



ZH07
weiß

* Stoff-Nummern in elektronischen / OFML Daten für Leder Ascot: AS..

in Klammern: Herstellernummern

Netze gestrickt

Hero



schwarz
8010



anthrazit
8009

Goal-Air

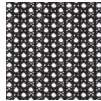


schwarz
8001



anthrazit
8009

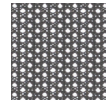
JOYCE^{IS3}



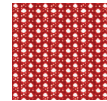
8240
uni, schwarz
KW40



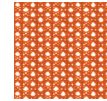
8244
uni, weiß
KW44



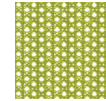
8248
anthrazit
KW48



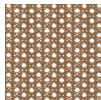
8223
feuerrot
KW23



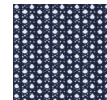
8213
verkehrsorange
KW13



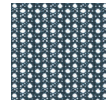
8214
maigrün
KW14



8225
beigegräu
KW25



8262
kobaltblau
KW62

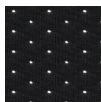


8272
pastellblau
KW72

in kursiv: Korrespondierender Strickbezug für Sitz

Softback gestrickt

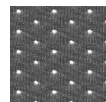
JOYCE^{IS3}



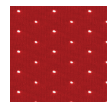
8340
uni, schwarz
KW40



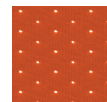
8344
uni, weiß
KW44



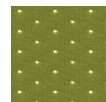
8348
anthrazit
KW48



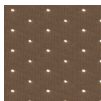
8323
feuerrot
KW23



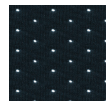
8313
verkehrsorange
KW13



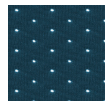
8314
maigrün
KW14



8325
beigegräu
KW25



8362
kobaltblau
KW62



8372
pastellblau
KW72

in kursiv: Korrespondierender Strickbezug für Sitz

Membran

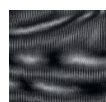
AirPad



schwarz
8840



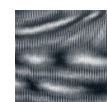
weiß
8844



uni, schwarz
8140
MH01



uni, weiß
8144



anthrazit
8148
MH41

in kursiv: Korrespondierende Stofffarben aus der Stoffkollektion Manhattan

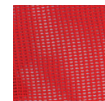
Webware

PURE^{IS3}, MOVY^{IS3}, VINTAGE^{IS5}, AIM^{IS1}, EVERY^{IS1}, BUDDY^{IS3}

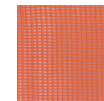
NETZE/INTEGRALSCHAUM/GESTELL- UND BESCHICHTUNGSFARBEN KUNSTSTOFF-FARBEN

Webware

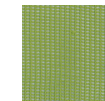
PURE^{IS3}, MOVY^{IS3}, AIM^{IS1}, EVERY^{IS1}, BUDDY^{IS3}



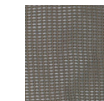
8123
feuerrot
MH03



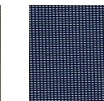
8113
verkehrsorange
MH13



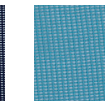
8114
maigrün
MH14



8125
beigegräu
MH25



8162
kobaltblau
MH62

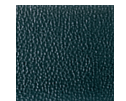


8172
pastellblau
MH72

in kursiv: Korrespondierende Stofffarben aus der Stoffkollektion Manhattan

Integralschaum

KINETIC^{IS5}



schwarz
2000



gräu
2002

Gestell- und Beschichtungsfarben



schwarz
..217



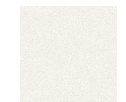
brillantsilber
..234



chrom
..324



poliert
..304



weiß
..283



silber, glänzend
gebürstet
..349

Kunststoff-Farben



schwarz
3217



weiß
3283



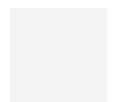
zitronengelb
3400



lachsorange
3401



pastelltürkis
3402



hellgräu
3261



gräu-weiß
3403



anthrazit
3231



blau
3206



rot
3207



grün
3245



gelb
3208



petrol
3A01



gräu-blau
3A02



teint
3A03

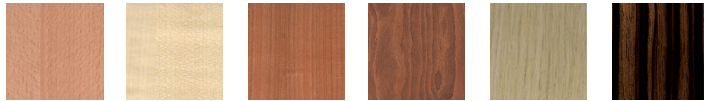


senf
3A04

Die Zuordnung, welche Modelle es in welchen Ausführungen bzw. Farben gibt, entnehmen Sie bitte den Tabellenteilen im vorderen Bereich der Preisliste bei den einzelnen Produktfamilien. Hier sind auch die jeweiligen Bestell-Nr. zugeordnet.

OBERFLÄCHEN/FARBEN/ TISCHKANTEN

Echtholz Furnier



Buche
450 / 430 /
4302A

Ahorn
451

Europäischer
Kirschbaum
453

Amerikanischer
Nussbaum
435 / 455 /
4352A

Eiche
434 / 459 /
4342A

Makassar
458

Dekore DBS / HPL



Buche natur
41F / 42F

Ahorn
41E / 42E

Kirsche hell
41H / 42H

Nussbaum hell
41I / 42I

Eiche hell
41G / 42G



premium-
weiß
41A / 42A /
4002A

weißgrau
41B / 42B

staubgrau
41C / 42C

schwarz
41D / 42D

Minerale Co-
con, (acrylat-
gebundenes
Naturmateri-
al) weiß
44412

weiß-
durchgefärbt
414

Glas



Klarglas
44400

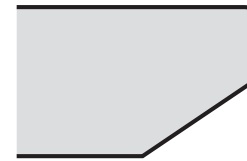
Die abgebildeten Holzarten für Tischoberflächen geben annähernd den Farbton und die Struktur der Serie wieder. Holz ist ein Naturprodukt. Für Serientische kommen immer wieder neue Furnierstämmen mit ver-

schiedener Struktur und Farbe zur Verwendung. Reklamation aufgrund materialbedingter Farb- und Strukturabweichungen können somit nicht anerkannt werden. Die Zuordnung, welche Modelle es in welchen

Ausführungen bzw. Farben gibt, entnehmen Sie bitte den Tabellenteilen im vorderen Bereich der Preisliste bei den einzelnen Produktfamilien. Hier sind auch die jeweiligen Bestell-Nr. zugeordnet.

Tischkanten

Fascino-2



NESTY^{S3}



Kante gerade, ABS (2mm)
Farbe wie Dekor

Kante, ABS mit Gummistoßkante
(R50)

Kante ABS
Tische Bootsform
Farbe bei Dekor Holzart:
MDF, klar lackiert,
Farbe bei Dekor einfarbig:
Farbgleich lackiert.

CURVE^{S1}, FORMEO^{S1}, VLEGS^{S3}



Kante gerade, ABS (2mm)

KINETIC^{S5}



Kante ABS

HUB^{S3}



Pods, Bänke & Desk: Kante ABS
Beistelltische: Kante lackiert

TANGRAM^{S5}



Kante gerade, schwarz