

HermanMiller Materials



Sayl Seating

Work Chairs/Stools

**3D intelligent™
suspension back
finishes**



Black
BK



Fog
63



Slate Grey
SG



Red
RO



Green Apple
79



Blue Berry
3M



Java
5B



Studio White
98

**Y-Tower/frame
and base
finishes**



Black
BK



Black/Polished
68



Studio White/Fog
65



Studio White/Polished
67

**Armpad
finishes**



Black
BK



Fog
63



Slate Grey
SG



Mulberry
82



Spruce
61



Twilight
97



Java
5B

Sayl Seating

Visitor Chairs

3D intelligent suspension and plastic back finishes



Black
BK



Fog
63



Slate Grey
SG



Red
RO



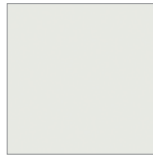
Green Apple
79



Blue Berry
3M



Java
5B



Studio White
98

3D intelligent suspension frame and back for upholstered back finishes



Black
BK



Fog
63



Slate Grey
SG



Mulberry
82



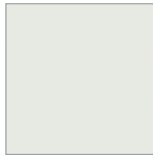
Spruce
61



Twilight
97



Java
5B

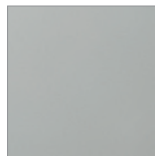


Studio White
98

Base finishes



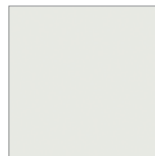
Black
BK



Trivalent Chrome
47



Metallic Silver
MS



Studio White
98

Ampad finishes



Black
BK



Fog
63

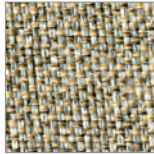
Upholstery

Price Band 0

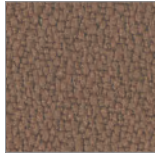


^{1,2}Phoenix
70
Camira

Price Band 1

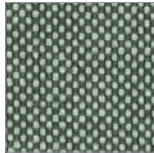


*Rivet
1RV
Camira

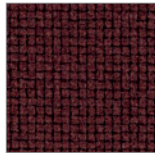


^{1,2}Xtreme
9B
Camira

Price Band 2



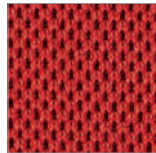
Field 2
1FD
Kvadrat



Go Uni
121
Gabriel



Medley
1HA
Gabriel



^{1,2}Unity / Nexus
1D
Camira

Price Band 3



¹Aquarius
7A
Camira



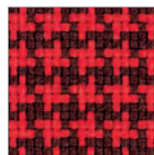
Blazer
Z1A
Camira



Canvas 2
ZC5
Kvadrat



Go Check
123
Gabriel



Go Couture
122
Gabriel

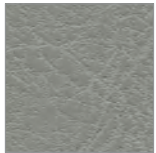
Price Band 4



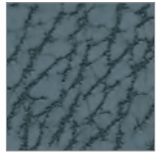
*Brisa
56B
Ultrafabrics



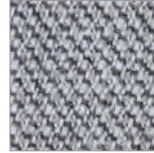
*Brisa Distressed
705
Ultrafabrics



*Brisa Fresco
707
Ultrafabrics

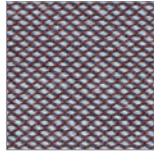


*Brisa Mokume
V9Z
Ultrafabrics



^{1,2}Capture
124
Gabriel

Price Band 6



Steelcut Trio 3
116/V25
Kvadrat

*Brisa range, Hero, Phoenix, Rivet, Unity and Xtreme are not certified for domestic use in the UK.

¹ as well as Seat pad, this is also available on Mid Back Seat & Back

² as well as Seat pad, this is also available on High Back Seat & Back

For more information, please visit hermanmiller.com or call +44 1225 794000



Aquarius

Camira

Composition:
Pure New Wool 100%

Application:
Width: 140cm +/- 2% Usable
Weight: 370g/m² +/- 5% (520g/linear metre +/- 5%)
Price Band 3

Standards:
Abrasion Resistance: 50,000 Martindale cycles
Flammability: BS EN 1021-1:2006, BS EN 1021-2:2006, BS EN 7176 :2007,
UNI 9175 (1987) - UNI 9175/FA1 (1994) IM
Optional – BS 5852:2006 Section 4 Ignition Source 5, BS 7176:2007 when FR treated
Light Fastness: 5 (ISO 105-B02: 1999)
Fastness to Rubbing: Wet: 4 Dry: 4 (ISO 105 – X12:2002)

Colour Matching: Batch to batch variations in shade may occur within commercial tolerances.

Maintenance: Vacuum regularly. Wipe clean with a damp cloth.



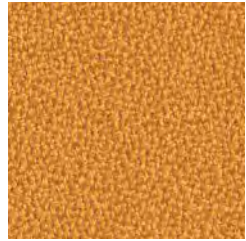
Sunglow
7A133

JA506



Stable
7A132

JA507



Zippy
7A104

JA426



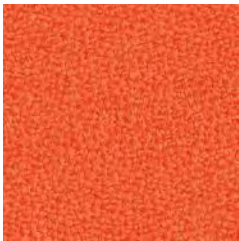
Amber
7A48

JA068



Branch
7A128

JA508



Circus
7A106

JA428



Tambourine
7A71

JA183

Aquarius



Jezebel
7A27

JA027



Cherry
7A99

JA419



Aniseed
7A105

JA427



Vermillion
7A43

JA062



Poison
7A55

JA084



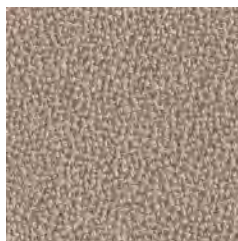
Paderborn
7A36

JA047



Fleece
7A130

JA509



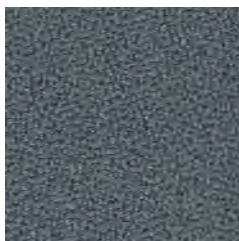
Ceres
7A93

JA409



Mushroom
7A57

JA125



Heron
7A01

JA001



Swart
7A49

JA069

Aquarius



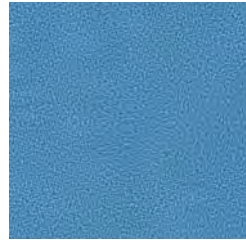
Pitch
7A02

JA002



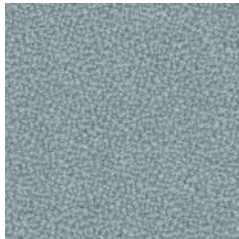
Spinoza
7A126

JA448



Iceberg
7A80

JA195



Ceramic
7A129

JA512



Frozen
7A131

JA510



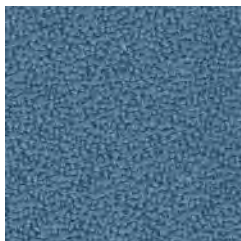
Rhino
7A22

JA022



Aristotle
7A98

JA416



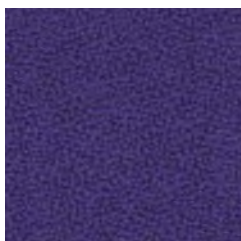
Porcelain
7A24

JA024



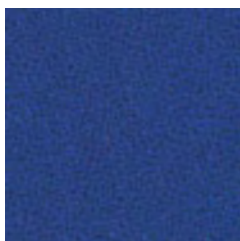
Bluebell
7A15

JA015



Purple
7A59

JA157



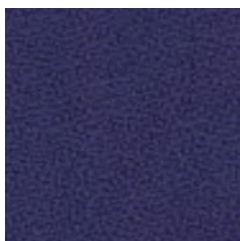
Smurf
7A60

JA159



Raisin
7A42

JA061



Leipzig
7A35

JA046



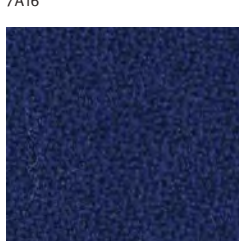
Mariner
7A16

JA016



Pascal
7A112

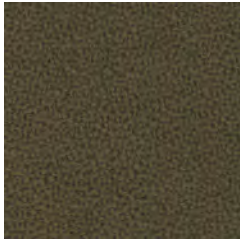
JA434



Vico
7A113

JA435

Aquarius



Army
7A127

JA511



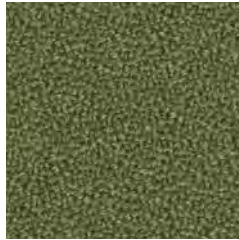
Tombola
7A120

JA442



Courgette
7A85

JA201



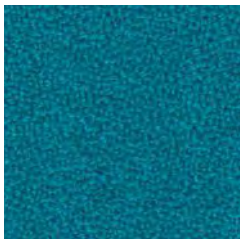
Pesto
7A61

JA169



Chomsky
7A121

JA443



Manta
7A79

JA194



Biscay
7A40

JA059



Phoenix

Camira

Composition:
polyester 100%

Application:
Width: 140cm +/- 2% Usable
Weight: 285g/m² +/- 5% (400g/linear metre +/- 5%)
Price Band 0

Standards:
Abrasion Resistance: 100,000 Martindale cycles
Flammability: BS EN 1021-1:2006, BS EN 1021-2:2006, BS EN 7176 :2007
Light Fastness: 6 (ISO 105-B02: 1999)
Fastness to Rubbing: Wet: 4 Dry: 4 (ISO 105 – X12:2002)

Colour Matching: Batch to batch variations in shade may occur within commercial tolerances.

Maintenance: Vacuum regularly. Wipe clean with a damp cloth.



Havana
70009 YP009



Sombrero
70046 YP046



Paseo
70019 YP019



Blizzard
70081 YP081



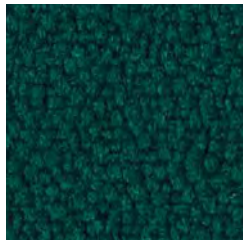
Nougat
70111 YP111



Sandstorm
70107 YP107



Montserrat
70011 YP011



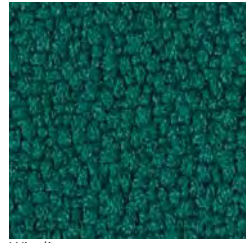
Taboo
70045 YP045

Phoenix



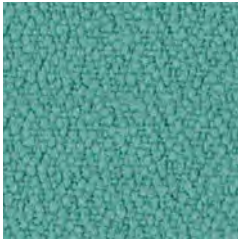
Rainforest
70114

YP114



Windjammer
70047

YP047



Campeche
70112

YP112



Arawak
70016

YP016



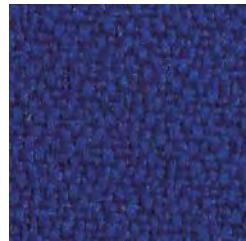
Apple
70108

YP108



Costa
70026

YP026



Ocean
70100

YP100



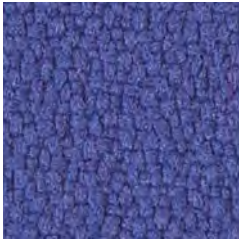
Scuba
70082

YP082



Parasol
70109

YP109



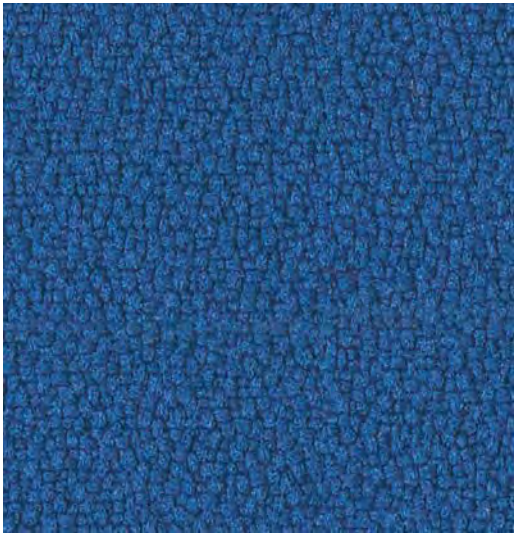
Bluefield
70021

YP021



Bluebell
70097

YP097



Curacao
70005

YP005



Cayman
70024

YP024

Phoenix



Tobago
70030

YP030



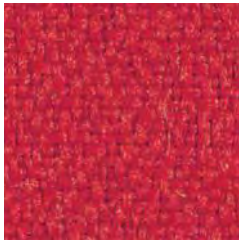
Guyana
70051

YP051



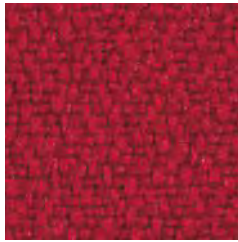
Tarot
70084

YP084



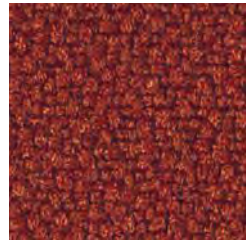
Belize
70105

YP105



Calypso
70106

YP106



Jamaica
70027

YP027



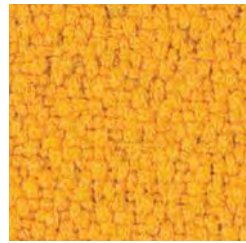
Lobster
70076

YP076



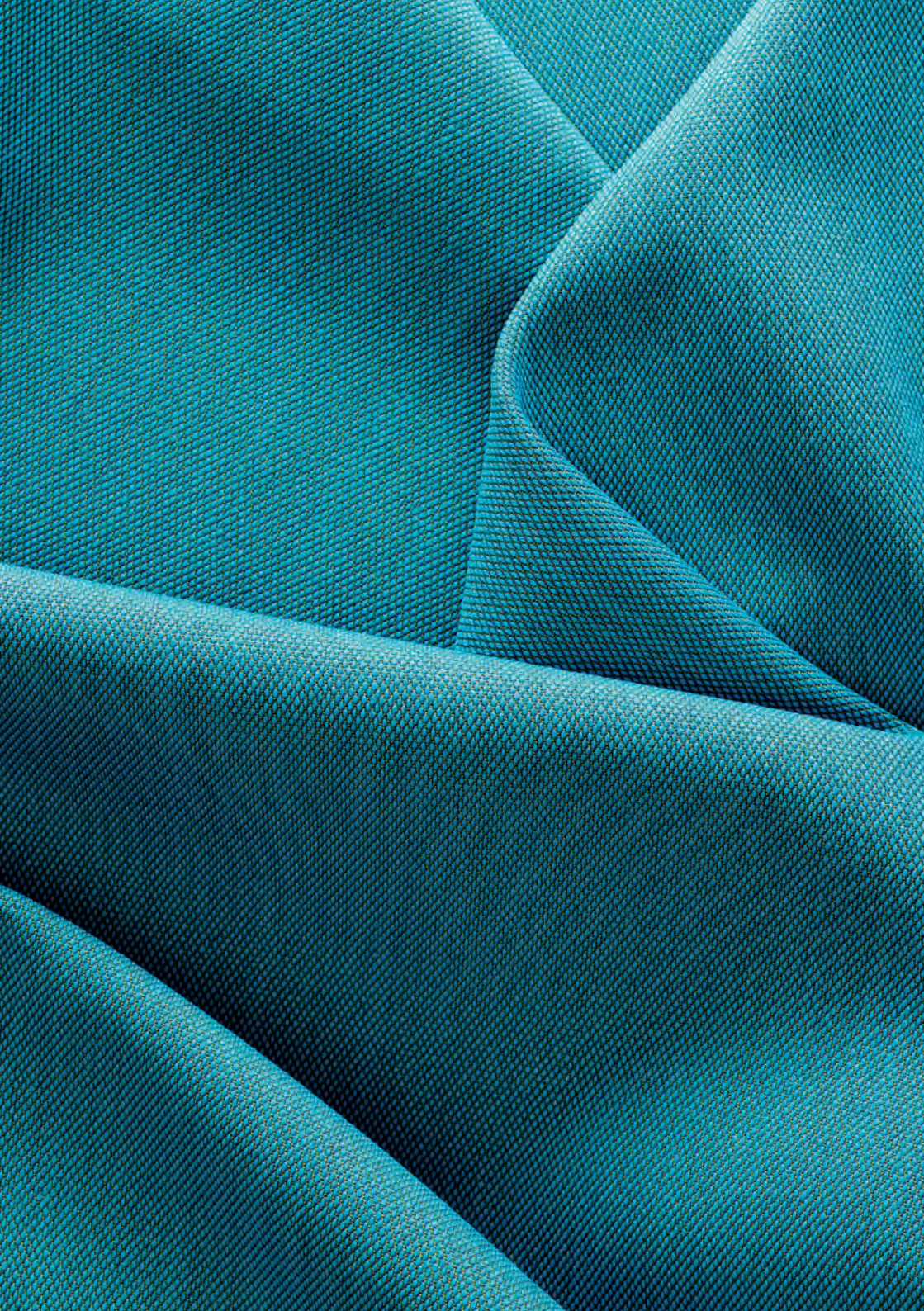
Olympic
70113

YP113



Solano
70110

YP110



Steelcut Trio 3

Kvadrat

Composition:

New Wool 90%, Nylon 10%

Application:

Width: 140cm

Weight: 770g/linear metre

Price Band 6

Standards:

Abrasion Resistance: 100,000 Martindale cycles

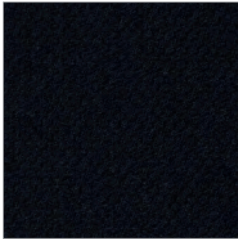
Flammability: EN 1021-1/2 ignition source 0-1. BS 5852 ignition source 2-3. DIN 4102 B2. NFD 60 013. UNI 9175 1IM. US Cal. Tech. Bull. 117. AS/NZS 3837 Class 2. IMO A.652(16).

Light Fastness: 5-7 (ISO)

Fastness to Rubbing: Wet: 4, Dry: 4-5 (ISO)

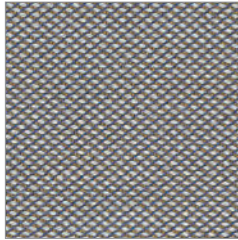
Colour Matching: Batch to batch variations in shade may occur within commercial tolerances.

Maintenance: Vacuum regularly. Wipe clean with a damp cloth.



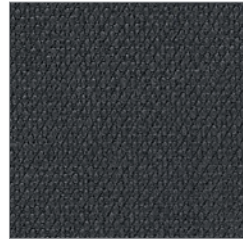
V2507

195



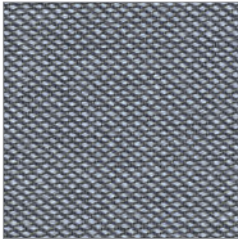
V2554

266



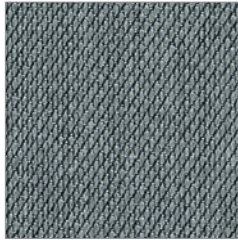
V2518

383



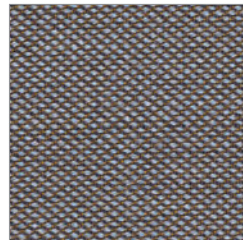
V2550

176



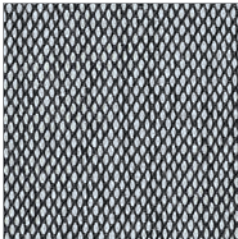
V2506

153



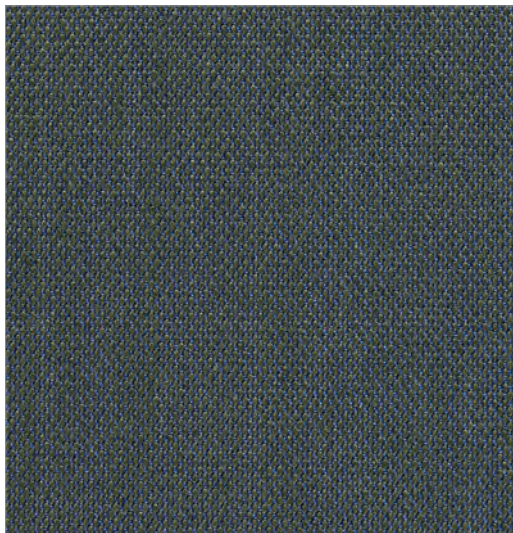
V2557

376



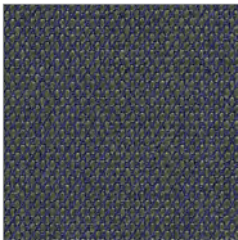
V2503

124



V2543

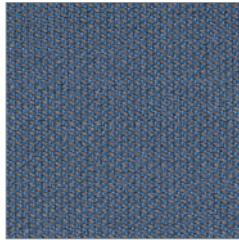
883



V2514

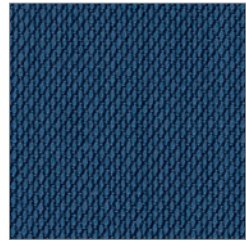
283

Steelcut Trio 3



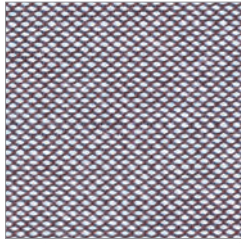
V2573

756



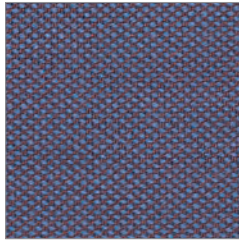
V2542

865



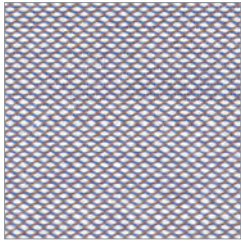
V2556

336



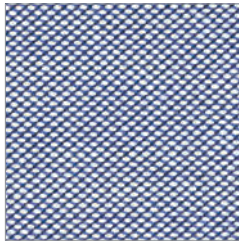
V2574

776



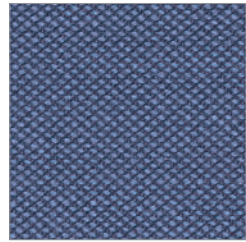
V2576

806



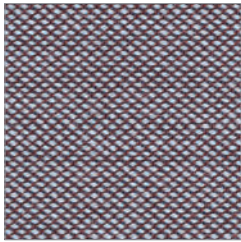
V2571

716



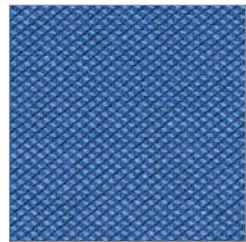
V2575

796



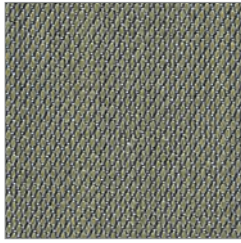
V2555

276



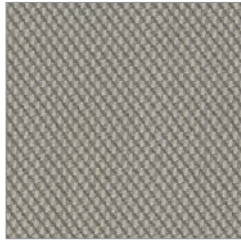
V2572

746



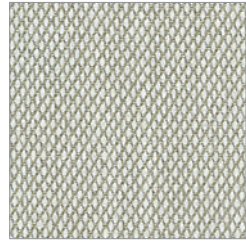
V2513

253



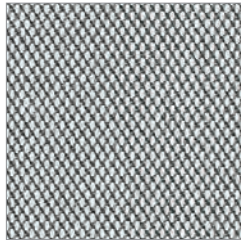
V2508

205



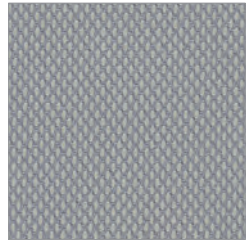
V2509

213



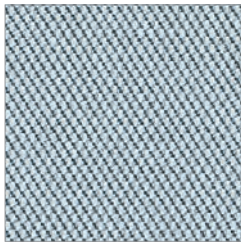
V2504

133



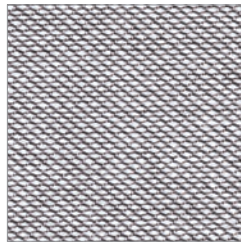
V2501

105



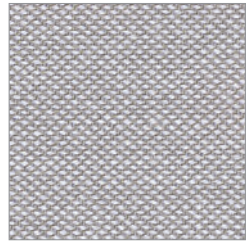
V2534

713



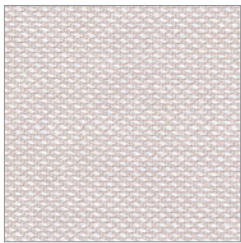
V2567

616



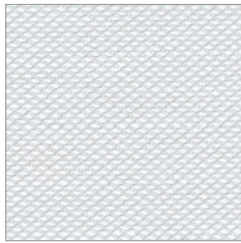
V2553

246



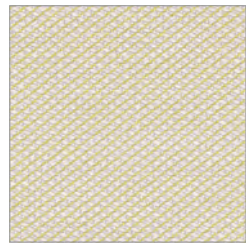
V2551

226



V2577

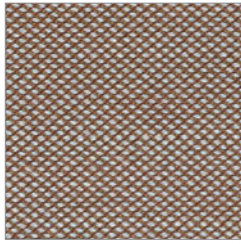
906



V2552

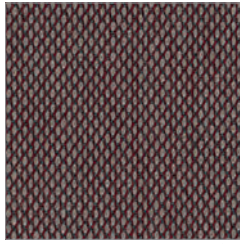
236

Steelcut Trio 3



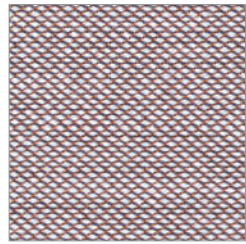
V2563

476



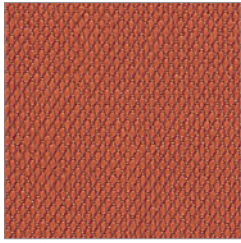
V2529

645



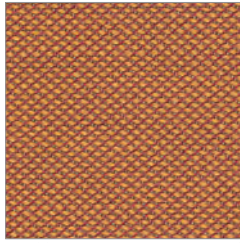
V2558

416



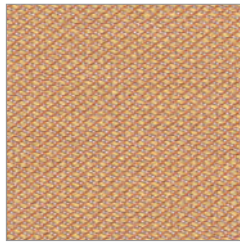
V2526

533



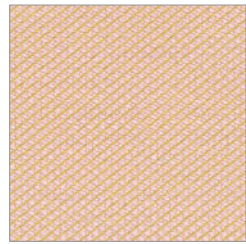
V2566

576



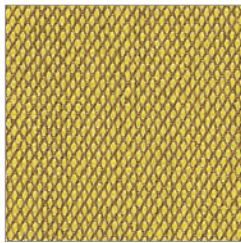
V2560

436



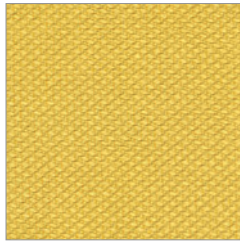
V2564

506



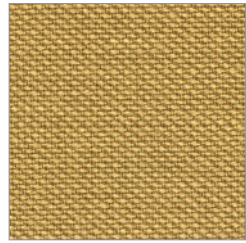
V2523

453



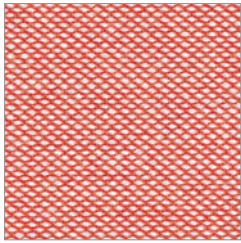
V2561

446



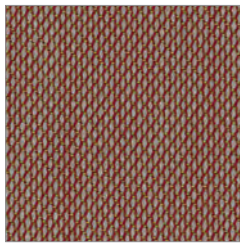
V2562

466



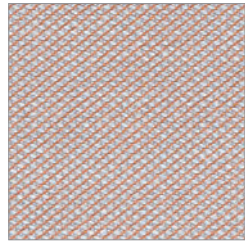
V2565

526



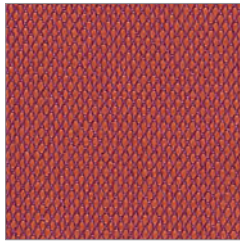
V2525

515



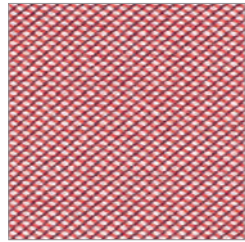
V2569

426



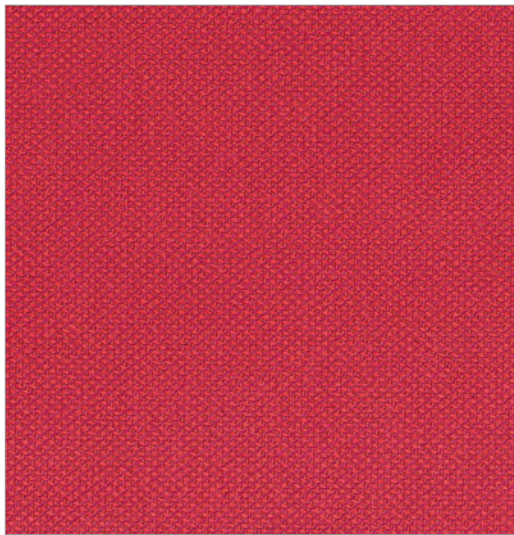
V2527

553



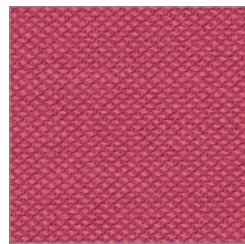
V2568

636



V2569

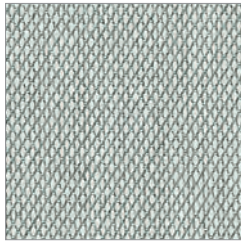
666



V2570

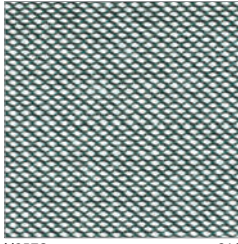
686

Steelcut Trio 3



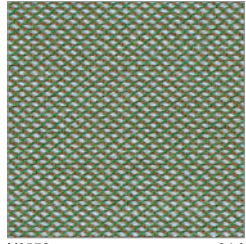
V2502

113



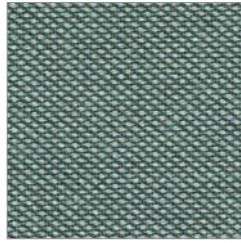
V2578

916



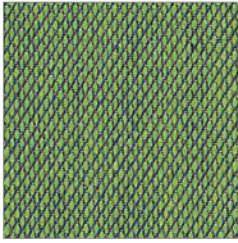
V2579

946



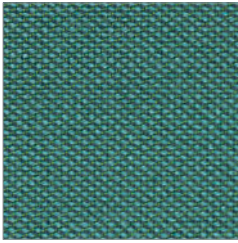
V2580

966



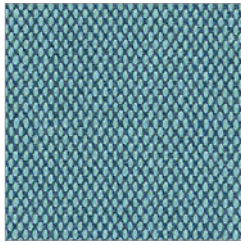
V2547

953



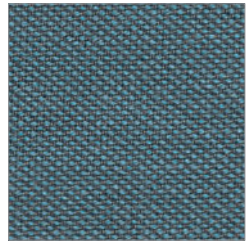
V2581

976



V2549

983



V2582

996



Unity/Nexus

Camira

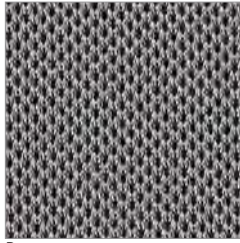
Composition:
Polyester 100%

Application:
Width 170cm +/- 2% Usable
Weight: 300g/m² +/- 5% (530g/linear metre +/- 5%)
price Band 2

Standards:
BS 2543: 1995/2004
Flammability: BS 476 part 7 class 1,
Light Fastness: 5 (ISO 105-B02: 1999)
Fastness to Rubbing: Wet: 4 Dry: 4 (ISO 105 – X12:2002)

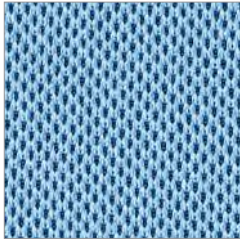
Colour Matching: Batch to batch variations in shade may occur within commercial tolerances.

Maintenance: Vacuum regularly. Wipe clean with a damp cloth.



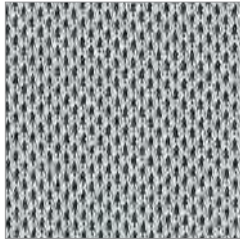
Pewter
ID01

UNY01



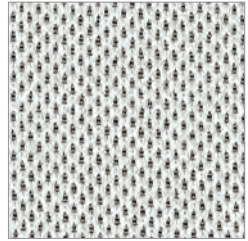
Sky
ID06

UNY06



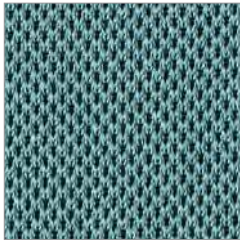
Storm
ID07

UNY07



Chalk
ID12

UNY12



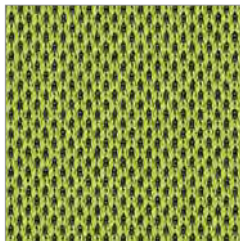
Petrol
ID10

UNY10



Limestone
ID02

UNY02



Kiwi
ID05

UNY05



Denim
ID08

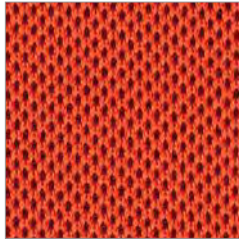
UNY08

Unity/Nexus



Olive
ID09

UNY09



Berry
ID04

UNY04



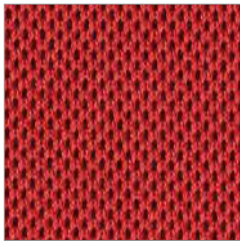
Pacific
ID03

UNY03



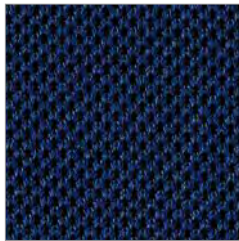
Graphite
ID11

UNY11



Russian
ID16

UNY16



Oceanic
ID15

UNY15



Black
ID13

UNY13



Xtreme plus

Camira

Composition:

Recycled Polyester 100%

Application:

Width 140cm +/- 2% Usable

Weight: 310g/m² +/- 5% (435g/linear metre +/- 5%)

Price Band 1

Standards:

BS 2543:1995/2004

Abrasion Resistance: 100,000 Martindale cycles

Flammability: BS EN 1021 - 1:2006, BS EN 1021 - 2:2006, BS 7176 : 2007, BS 5852 : 2006 Section 4

Ignition Source 5, UNI 8456 & UNI 9174 Class 1, NF - P - 92- 507 M1, NF D 60-013:2006, DIN 4102 B1

Light Fastness: 6 (ISO 105-B02: 1999)

Fastness to Rubbing: Wet: 4 Dry: 4 (ISO 105 - X12:2002)

Colour Matching: Batch to batch variations in shade may occur within commercial tolerances.

Maintenance: Vacuum regularly. Wipe clean with a damp cloth.



Havana
9B03

YS009



Andaan
9B48

YS144



Bonaire
9B65

YS172



Padang
9B49

YS145



Arawak
9B06

YS016



Leeward
9B57

YS164



Twister
9B27

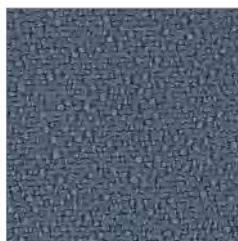
YS083

Xtreme plus



Navassa
9B56

YS162



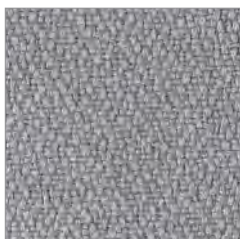
Blizzard
9B25

YS081



Slip
9B32

YS094



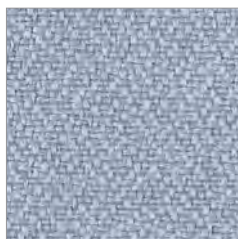
Buru
9B63

YS170



Osumi
9B64

YS171



Rum
9B66

YS173



Costa
9B09

YS026



Cayman
9B08

YS024



Ocean
9B34

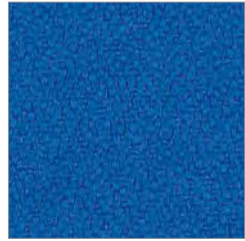
YS100



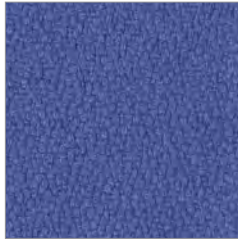
Curacao
9B02 YS005



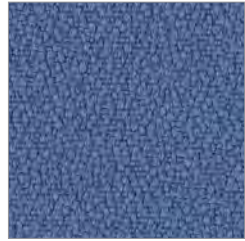
Scuba
9B26 YS082



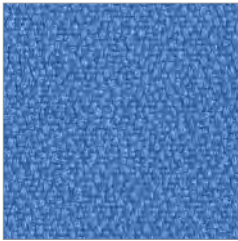
Honeymoon
9B45 YS035



Bluefield
9B07 YS021



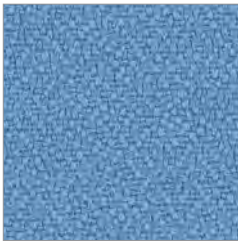
Martinique
9B01 YS004



Bluebell
9B33 YS097



Parasol
9B17 YS073



Anguilla
9B62 YS169

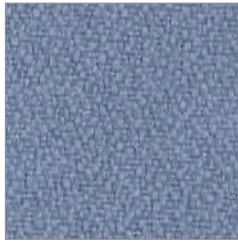


Bridgetown
9B37 YS102



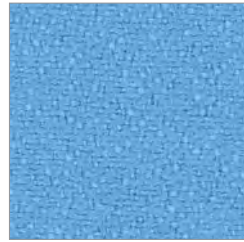
Mauve
9B35 YS069

Xtreme plus



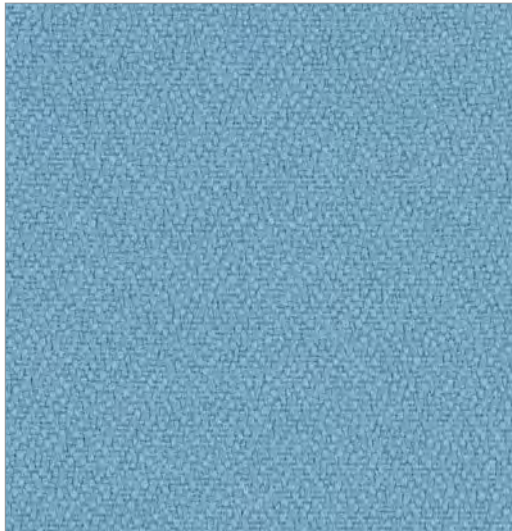
Steel
9B36

YS095



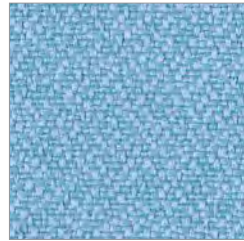
Marianna
9B51

YS157



Orchilla
9B60

YS167



Arecibo
9B67

YS174



Tarot
9B28

YS084



Tobago
9B11

YS030



Tokara
9B46

YS136



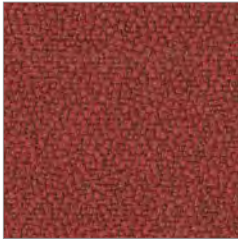
Calypso
9B31

YS086



Diablo
9B38

YS101



Jamaica
9B10

YS027



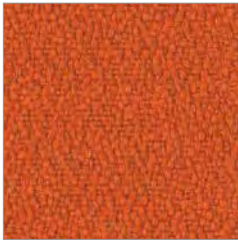
Panama
9B23

YS079



Belize
9B39

YS105



Lobster
9B20

YS076



Tortuga
9B61

YS168

Xtreme plus



Solano 9B16 YS072



Bounty 9B30 YS086



Sombrero 9B13 YS046



Krabi 9B47 YS141



Nicobar 9B52 YS158



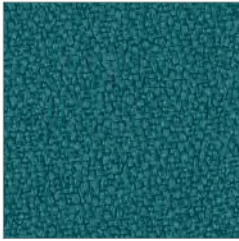
Nougat 9B42 YS091



Sandstorm 9B15 YS071

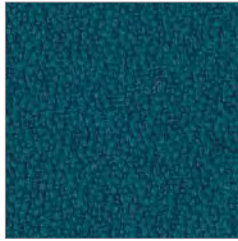


Taboo 9B12 YS045



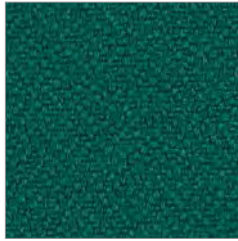
Windjammer
9B14

YS047



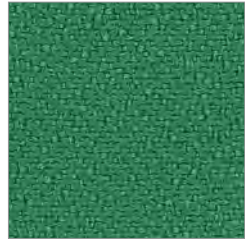
Montserrat
9B04

YS011



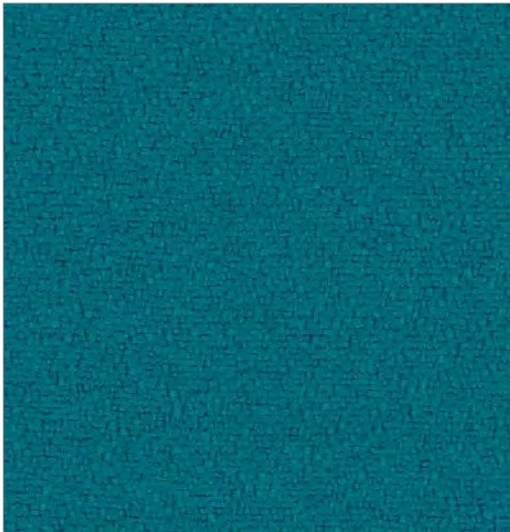
Flores
9B55

YS161



Lombok
9B53

YS159



Tonga
9B54

YS160



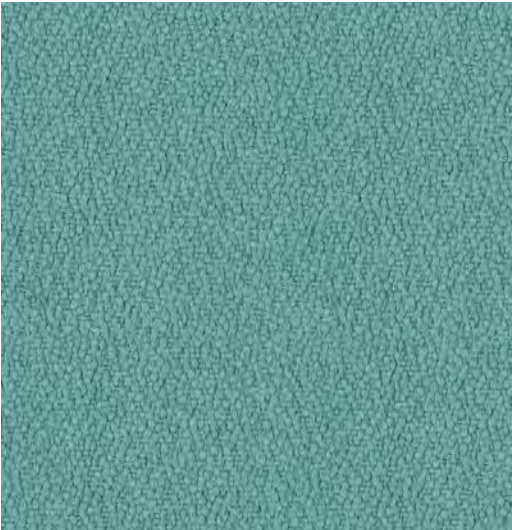
Appledore
9B21

YS077

Xtreme plus



Madura 9B50 YS156



Campeche 9B18 YS074



Apple 9B44 YS096



Aruba 9B43 YS108



Manado 9B59 YS166

