

# FABRICS & COLOURS STANDARD COLLECTION

**Flokk**



# Standard Collection

## TECHNICAL SPECIFICATIONS

	XTREME by Camira	SELECT by Gabriel	CAPTURE by Gabriel	PATINA by Camira	NEXUS by Camira	NOTE by Gabriel	STEELCUT TRIO 3 by Kvadrat	SIRDAL/SULDAL by GU*	COMFORT+ by Gabriel	PALOMA SOFT by Wollsdorf
<b>COMPOSITION (%)</b>										
Wool	-	85	85	69	-	85	90	-	-	-
Norwegian wool	-	-	-	-	-	-	-	100	-	-
Flax	-	-	-	22	-	-	-	-	-	-
Polyurethane	-	-	-	-	-	-	-	-	12	-
Polyamide	-	15	15	8	-	15	10	-	-	-
Polyester	-	-	-	-	100	-	-	-	51	-
Post-consumer recycled Polyester	100	-	-	-	-	-	-	-	-	-
Recycled Polyester	-	-	-	-	-	-	-	-	37	-
Viscose	-	-	-	1	-	-	-	-	-	-
Cattle hides	-	-	-	-	-	-	-	-	-	100
<b>ENVIRONMENTAL FACTS</b>										
EU Ecolabel	◆	◆	◆	◆	-	◆	◆	-	-	-
Oeko-Tex® Standard 100	◆	◆	◆	◆	◆	◆	-	-	◆	◆
ISO 14001 certified (company)	◆	◆	◆	◆	◆	◆	◆	◆	◆	◆
100% free of heavy metals	◆	◆	◆	◆	◆	◆	◆	◆	◆	◆
ECO2L	-	-	-	-	-	-	-	-	-	◆
Blue Angel RAL-U2 148	-	-	-	-	-	-	-	-	-	◆
Chrome-free leather tanning	-	-	-	-	-	-	-	-	-	◆
Greenguard Gold	-	-	-	-	-	-	◆	-	-	-
Indoor Advantage Gold	◆	-	-	◆	-	-	-	-	-	-
<b>FLAMMABILITY</b>										
BS EN 1021 - Cig. & Match	◆	◆	◆	◆	◆	◆	◆	◆	◆ <sup>3)</sup>	◆
BS 7176 Low Hazard	◆	-	-	◆	◆ <sup>1)</sup>	-	-	-	-	-
BS 7176 Medium Hazard	◆	-	-	◆ <sup>1)</sup>	-	-	-	-	-	-
BS 5852 Part 1 0,1 Cig. & Match	-	◆	◆	-	-	◆	◆	-	◆ <sup>1)</sup>	-
BS 5852 Crib 5	◆	◆ <sup>1)</sup>	◆ <sup>1&amp;2)</sup>	◆ <sup>1)</sup>	-	◆ <sup>1)</sup>	◆ <sup>2)</sup>	-	-	◆
DIN 4102 BI	◆	-	-	-	-	-	-	-	-	-
NF D 60-013	◆	-	-	-	-	-	-	-	-	-
CA TB 117-2013	-	◆	◆	◆	◆	◆	◆	-	◆	-
IMO MSC 307 (88) Annex 1 part 8	-	◆	-	-	-	◆	◆	◆	-	◆
<b>FASTNESS TO RUBBING</b>										
Dry	4	4-5	4-5	4	4	4-5	4-5	4-5	4-5	1000/4
Wet	4	4-5	4-5	3	4	4	3-5	4	4	80/4
<b>OTHER</b>										
Weight (g/m2)	310	510	475	305	330	510	770	800	385	-
Width (cm)	140	140	140	140	173	140	140	133	140	-
Abrasion (Martindale)	>100 000	200 000	200 000	>100 000	>100 000	200 000	100 000	>57 000	150 000	-
Pilling	4	4	4-5	3	4	4	4	3-4	5	-
Light fastness	6	5-8	5-7	5	5	5-8	6-7	5-7	5-7	6

**MAINTENANCE**

To be vacuumed with a furniture brush or wiped with a clean, white cloth or sponge slightly dampened with clean lukewarm water.

**FOR COMPLETE SPECIFICATION SEE OUR SUPPLIERS WEBISTES**

camirafabrics.com

gabriel.dk

gu.no

kvadrat.dk

wollsdorf.com

1) Pass with CMHR foam

2) Pass with flame retardant treatment

3) Pass match with CMHR foam

GU\* Gudbrandsdalens Uldvarefabrik

# Xtreme – PRICE GROUP 1

100% recycled polyester – crêpe structure – stretchy – durable

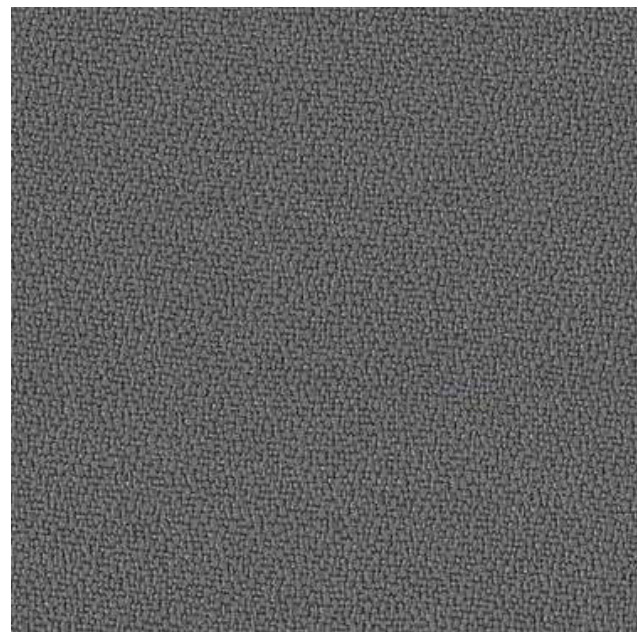
XTREME is a crêpe fabric made from 100% recycled polyester that features exceptional Euro flammability performance. Extra stretch and structure gives an irregular, shiny finish.



Xtreme – EXR079



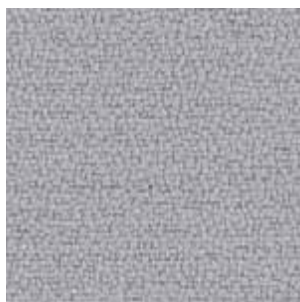
Xtreme – EXR026



Xtreme – EXR081



Xtreme – EXR024



Xtreme – EXR094



Xtreme – EXR145



Xtreme – EXR009

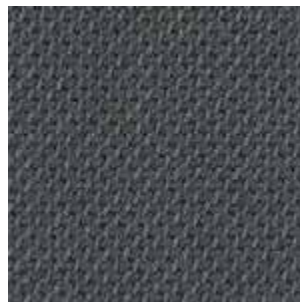
## Select – PRICE GROUP 2

New Zealand wool worsted – diagonal relief structure – soft – durable

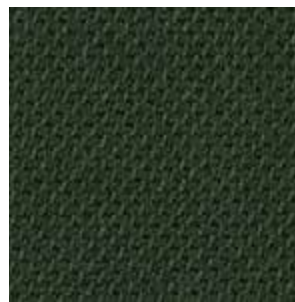
**SELECT** is a classic woolen fabric with a tightly woven relief structure, combining excellent softness, stretch and durability. Its rich texture with the interplay of light and shadow add depth to its structure and colours



SC 60139



SC 60003



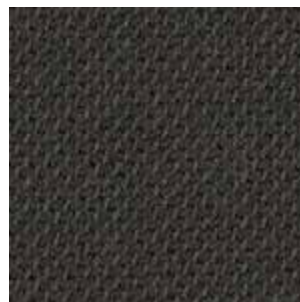
SC 68209



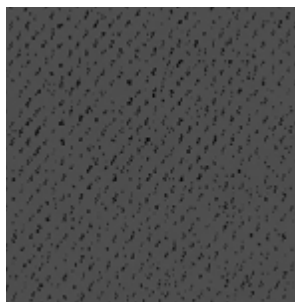
SC 63102



SC 60999



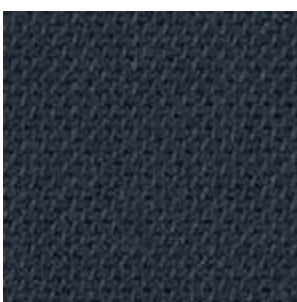
SC 60134



SC 60051



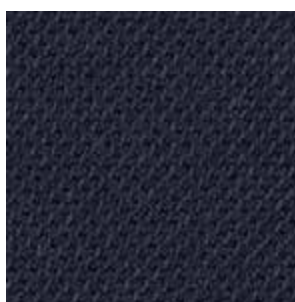
SC 61190



SC 66194



SC 66071



SC 66144



SC 64216

# Capture – PRICE GROUP 3

New Zealand wool – lightly felted – soft – durable

CAPTURE is a lightly felted and multi-coloured wool fabric combining softness, stretch and strength. It fuses light and dark colours to a refined mélangé pattern in subtle nuances, which add richness and depth to the design.



CPT6101



CPT5102



CPT6401



CPT4102



CPT4401



CPT6601



CPT4601



CPT6501



CPT5501



CPT5701

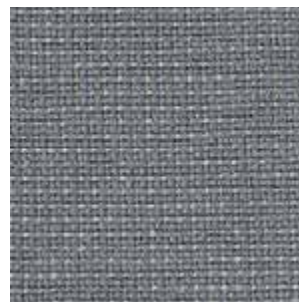
# Patina – PRICE GROUP 3

Wool/flax blend - fine structure - delicate feel -  
natural mélange effect - durable

PATINA has a high content of natural fibers, combining wool and flax for a delicate feel. Drawing inspiration from Pattern in Nature revealed to us by its fine structure and carefully balanced colours. It is about designing with nature to achieve beauty with performance.



PAT04



PAT34



PAT24



PAT01



PAT16



PAT15

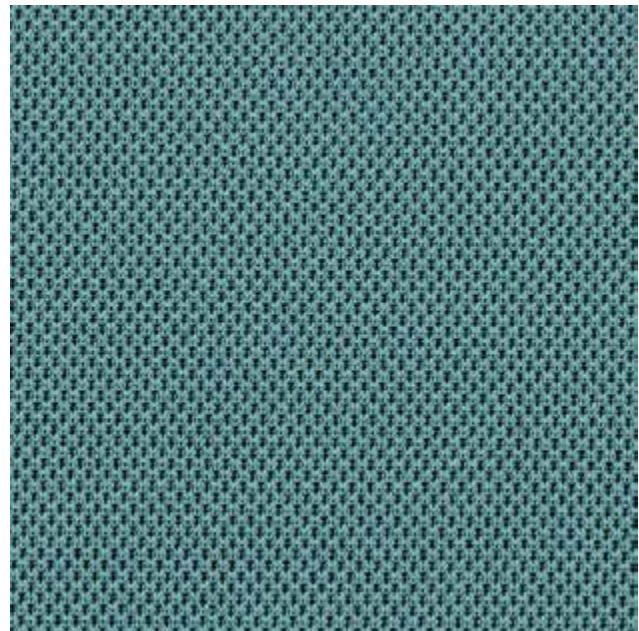
# Nexus – PRICE GROUP 3

Polyester knit – Piqué structure – two-dimensional stretch – durable

**NEXUS** is a polyester knit in a sleek and stylish pinprick dot matrix design effect giving a granulated structured surface. The black yarn foundation highlights the structured surface in combination with fresh but subtle colours.



Nexus – NEX16



Nexus – NEX10



Nexus – NEX05



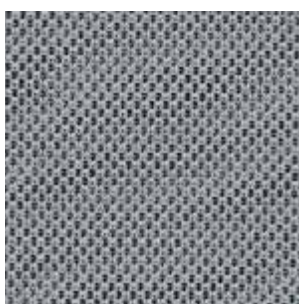
Nexus – NEX08



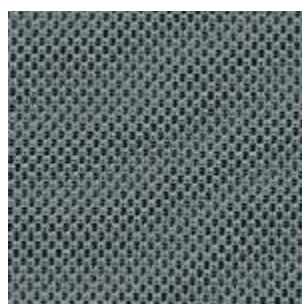
Nexus – NEX03



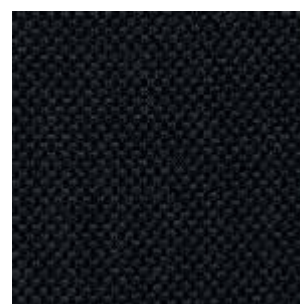
Nexus – NEX15



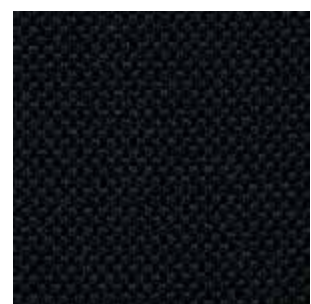
Nexus – NEX07



Nexus – NEX01



Nexus – NEX11

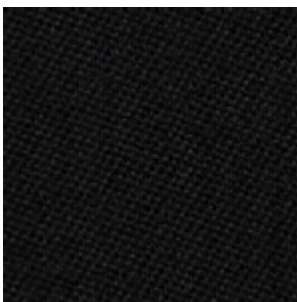


Nexus – NEX13

## Note – PRICE GROUP 3

New Zealand wool worsted – satin structure – soft – strong

**NOTE** is a soft and noble fabric which, with its classic satin structure, allows the wool's natural lustre to shine and impress.



Note – NT60999



Note – NT60087



Note – NT60003



Note – NT60088



Note – NT61148



Note – NT67033



Note – NT67066

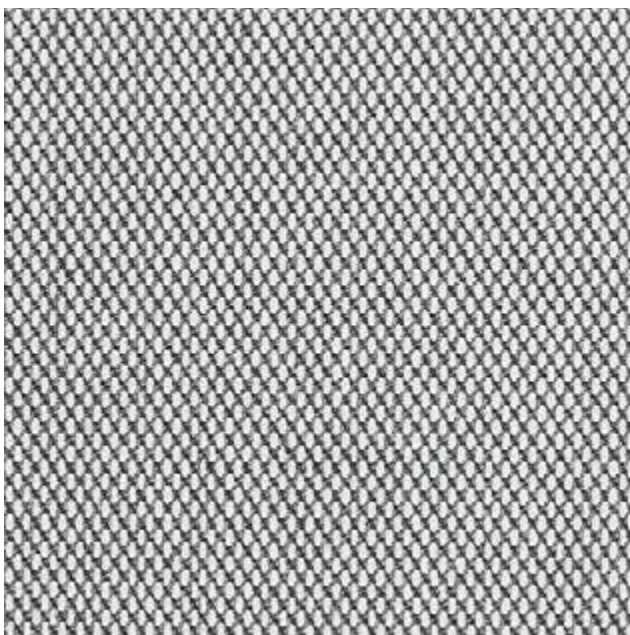


# Steelcut trio 3 – PRICE GROUP 4

New wool worsted – semi-plain structure – tricoloured 3D effect

solid – hard wearing

STEELCUT TRIO 3 is a strong worsted wool and polyamide woven fabric, made with three different coloured yarns. The colours and the special weave create a three-dimensional surface where the colours seem to change depending on the angle of perspective.



Steelcut Trio 2 – STT133



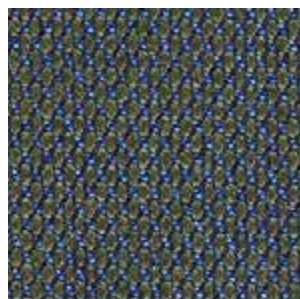
Steelcut Trio 2 – STT153



Steelcut Trio 2 – STT253



Steelcut Trio 2 – STT1652



Steelcut Trio 2 – STT883



Steelcut Trio 2 – STT383



Steelcut Trio 2 – STT1192

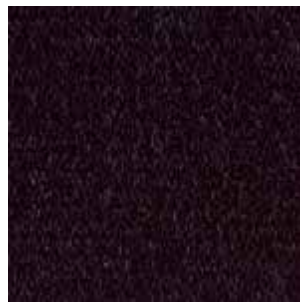
## Sirdal and Suldal – PRICE GROUP 4

100% pure Norwegian wool – wollen – granité structure  
high resilience – durable

SIRDAL AND SULDAL are part of the 100% Norwegian wool trio Sirdal, Suldal and Setesdal. These fabrics are uniquely short-travelled in every part of the process – 100% pure Norwegian wool manufactured in Norway. Norwegian wool with its distinctive brilliance, resilience and durability is expressed through rich structures that evoke authenticity paired with chic and modern comfort.



Sirdal – SRD 190



Suldal – SUL 180



Suldal – SUL 810



Sirdal – SRD 730

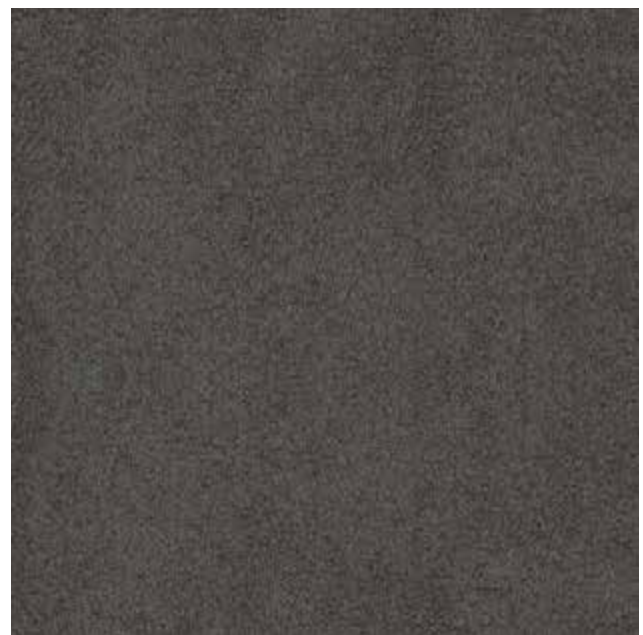
## Comfort+ – PRICE GROUP 4

37% recycled polyester – microfibre – soft – hard wearing

COMFORT+ has a uniform stretchability and excellent non-pilling properties. A unique combination of fibres giving a durable soft surface.



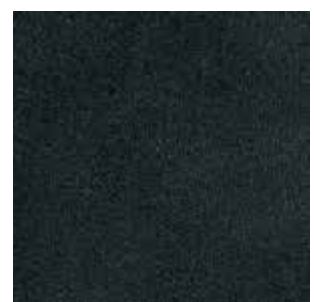
Comfort+ – CMF1414



Comfort+ – CMF0049



Comfort+ – CMF0040



Comfort+ – CMF0050

# Paloma soft – PRICE GROUP 6

Semi-aniline leather – chrome-free – soft – high durability

A HIGH-QUALITY chrome-free semi-aniline leather. All our standard colours from Paloma have a special finish adding a particular softness to the leather. Excellent friction and breathing properties.



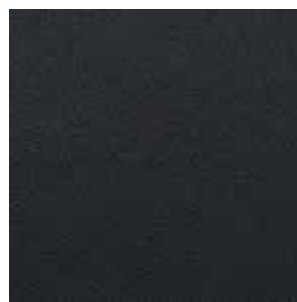
Paloma Soft – ATG55130



Paloma Soft – ATG55206



Paloma Soft – ATG55115



Paloma Soft – ATG55185



Paloma Soft – ATG56100